

LESTER P.U.D. - PLAT ONE

SITUATE IN THE SOUTHEAST ONE-QUARTER OF SECTION 35,
TOWNSHIP 45 SOUTH, RANGE 42 EAST, PALM BEACH COUNTY, FLORIDA.
SHEET 7 OF 9
JULY, 1999

0742-004

57

NORTH LINE OF THE S.E. 1/4 OF SECTION 35
TOWNSHIP 45 SOUTH, RANGE 42 EAST

INDIAN SPRINGS PARCEL EIGHT
(P.B. 65, PG. 66-67)

LAKE WORTH DRAINAGE DISTRICT L-27 CANAL

POINT OF COMMENCEMENT
N.E. CORNER OF THE S.E. 1/4 OF SECTION
35, TOWNSHIP 45 SOUTH, RANGE 42 EAST
FOUND PALM BEACH COUNTY BRASS 01631

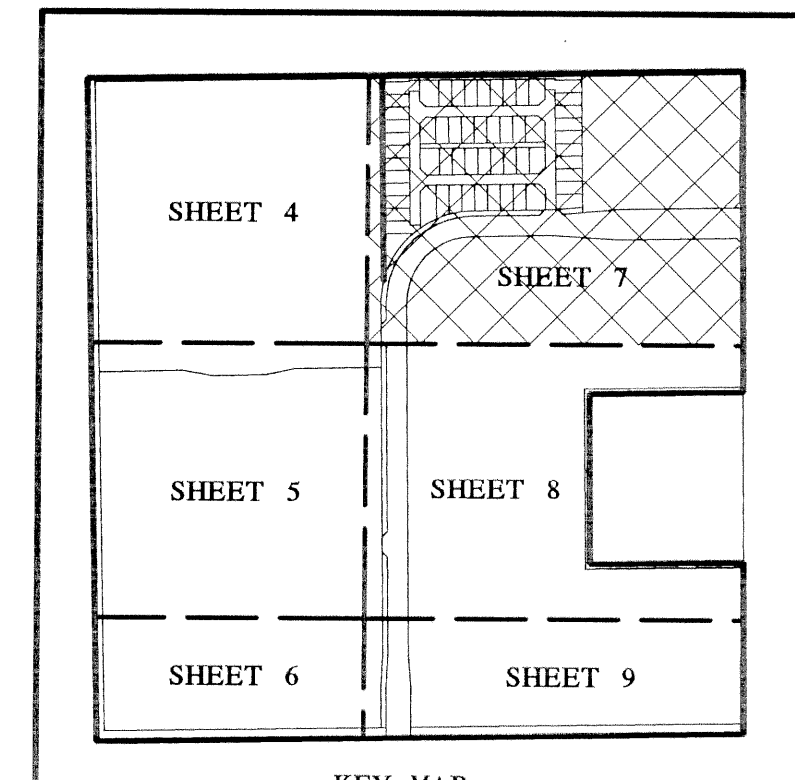
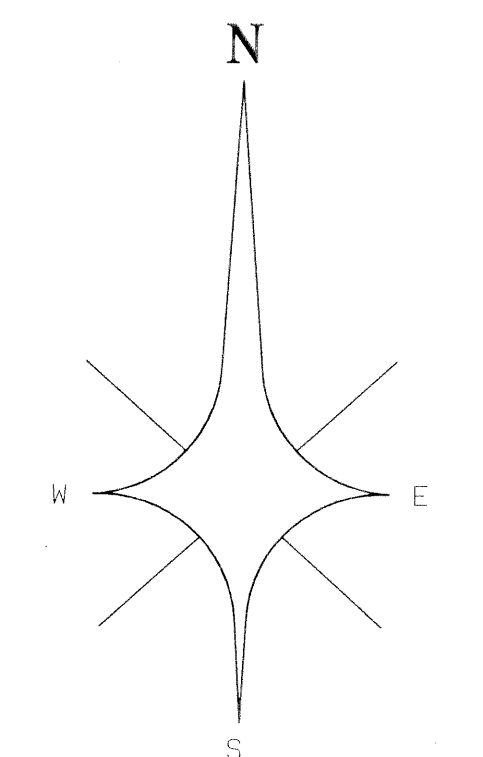
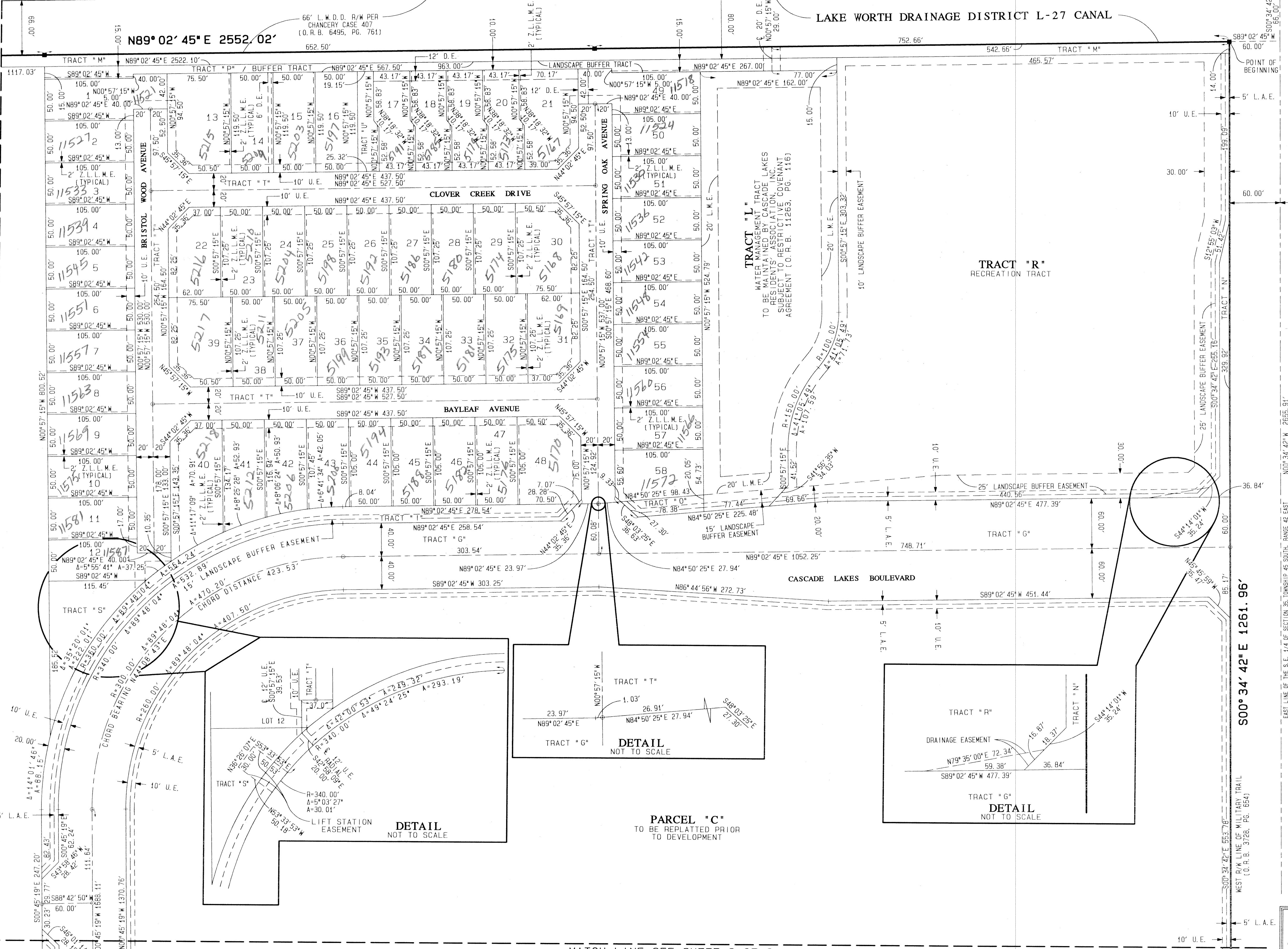
STATE OF FLORIDA } SS
COUNTY OF PALM BEACH }
THIS PLAT WAS FILED FOR
RECORD AT _____ DAY OF
THIS _____ AD, 1999 AND
DULY RECORDED IN PLAT BOOK
_____ ON PAGES _____ AND

DOROTHY H. WILKEN, CLERK
CIRCUIT COURT
BY: _____ DC

LEGEND:
A = CENTRAL ANGLE/Delta
C = CENTERLINE
CH = CHORD
D.B. = DEED BOOK
D.E. = DRAINAGE EASEMENT
F.P. & L. = FLORIDA POWER AND LIGHT COMPANY
A = ARC LENGTH
L.A.E. = LIMITED ACCESS EASEMENT
L.M.A.E. = LAKE MAINTENANCE EASEMENT
L.M.E. = LAKE MAINTENANCE EASEMENT
L.W.D. = LAKE WORTH DRAINAGE DISTRICT
N.R. = NON-RADIAL
N.T.S. = NOT TO SCALE
O.R.B. = OFFICIAL RECORDS BOOK
P.B. = PLAT BOOK
P.G. = PAGE
P.O.B. = POINT OF BEGINNING
P.O.C. = POINT OF COMMENCEMENT
R = RADIUS (RADII)
R.F. = RADIAL TO FRONT LOT LINE
R.R. = RADIAL TO REAR LOT LINE
R/W. = RIGHT OF WAY
U.E. = UTILITY EASEMENT
W.C. = WITNESS CORNER
Z.L.L.M.E. = ZERO LOT LINE MAINTENANCE EASEMENT
⊙ = PERMANENT CONTROL POINT (PCP)
PCP LB4820
■ = PERMANENT REFERENCE MONUMENT (PRM)
SET PRM LB4820

PARCEL "A"
TO BE REPLATTED PRIOR
TO DEVELOPMENT
MATCH LINE SEE SHEET 4 OF 9

PARCEL "A"
TO BE REPLATTED PRIOR
TO DEVELOPMENT
MATCH LINE SEE SHEET 8 OF 9



MILITARY TRAIL
STATE ROAD 809
(COR. P.B. 2, PG. 26)
(O.R.B. 3728, PG. 654)

ATLANTIC - CARIBBEAN MAPPING, INC.
3062 JOG ROAD - GREENACRES, FLORIDA 33457
(561) 964-7884; FAX (561) 964-1969

Lester PUD - Plat 1
PUD 57
PUD 3058
PUD 33437
PUD 959
Lester PUD